



**SitkaLanding** *Estero*

Welcome to Sitka Landing! A new community with 64 single family homes ranging from 950 - 1200 square feet. Our Exclusive West Coast designed 2 and 3 bedroom homes from Supermod homes create this truly unique development.

A community close to trails, fishing, shopping, beaches, lakes, skiing, golfing and much more. Rentals and Pets allowed. Move in early 2023. [www.sitkalanding.com](http://www.sitkalanding.com)



# estero.

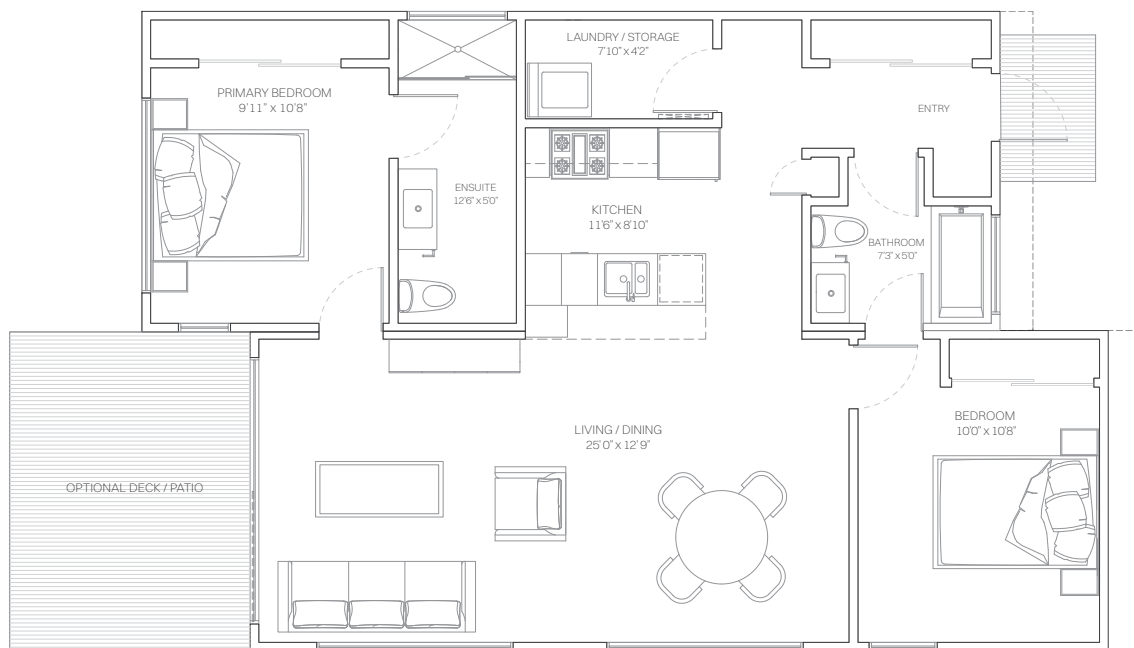
Is our 950 square foot home with 2 spacious bedrooms and 2 full bathrooms. In addition to an open concept kitchen, dining and living, there is a laundry room and storage. Estero has a layout to maximize its usable living space.

Like all Supermod homes, Estero comes with standard high end finishes including quartz countertops with waterfall edge, custom cabinets, 10' vaulted ceilings, oversized sliding glass doors and a heat recovery system ensuring your home's temperature will stay consistent, while keeping your annual costs down. The exteriors have James Hardie and Metal siding, Metal Standing seam roofs, and come solar and EV charging ready. Supermods homes are built to the highest standards starting with a full steel frame that will last a lifetime.



**360° Viewer**

[Click here for an immersive 360 experience](#)





# ESTERO.

## Specifications

2 Bedroom Laundry & Storage  
2 Bathroom 950 Square Feet

## Contact

[hello@sitkalanding.com](mailto:hello@sitkalanding.com)

## Comprehensive Warranty

2/5/10 Year new home warranty  
Dedicated support from Team **Supermod**

# Features

## Premium Kitchens

- Custom cabinets with soft close & designer hardware
- Wood grain feature cabinetry
- Large stainless kitchen sink
- Faucet with pull down spray head
- Quartz countertops with waterfall edge
- Pendant lights above island
- Pantry off the kitchen
- Stainless steel appliance package with gas range

## Designer Interiors

- Two colour schemes: mist & storm
- 10' vaulted ceilings
- Designer coordinated color schemes
- Heat recover system
- Wide vinyl plank flooring
- Full height double glazed 8' x 11' oversized patio doors
- Dimmable pot light fixtures

## Framing & Exterior Finishes

- Full lgs steel framing with g90 coating
- Metal standing seam roofing
- Metal & james hardie siding
- Wood grain metal feature areas & soffits
- Full wrap exterior rigid insulation
- Frost free hose bibs
- Exterior electrical outlets
- Outdoor gas connection for heater and bbq
- R32 vaulted ceiling
- R-36 floor system
- Effective R22 walls

## Spa Inspired Bathrooms

- Full tile shower & tub surrounds
- Primary walk-in shower with frame-less glass
- Full tub in secondary bathroom
- Rain shower heads
- Custom cabinets with soft close & designer hardware
- Quartz countertops

## Additional

- Full size washer & dryer
- Ring doorbell
- 9" smart home station with smart lights & more
- Solar & electric charging stations ready
- Storage room
- Hard-wired smoke detectors
- Gas on demand hot water system
- 100-amp electric service panel with arc fault breakers



# MIST



## Tile

4" x 12"  
White

supermod.



## Flooring

Rigid Core Luxury Vinyl Plank  
French Oak

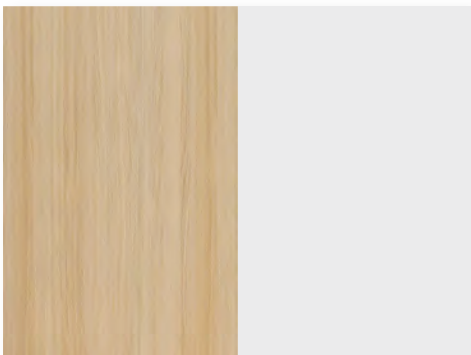
supermod.



## Countertops

Quartz  
Statuario

supermod.



## Cabinets

Ivory Oak  
Snowfall White

supermod.



## Paint

Benjamin Moore  
Chantilly Lace OC-65

supermod.

## supermod.

We strongly believe in delivering a premium product which is why choose quality products and materials in constructing all **supermod** homes. No upgrades are needed with our premium standard finishes.

During the purchase process of your home for the Sitka Landing development, you can choose from our pre-set options for cabinets, tile, flooring, and paint, along with exterior finishes and details. Utilizing 3D design we have detailed your entire home, inside and out to ensure nothing has been overlooked.

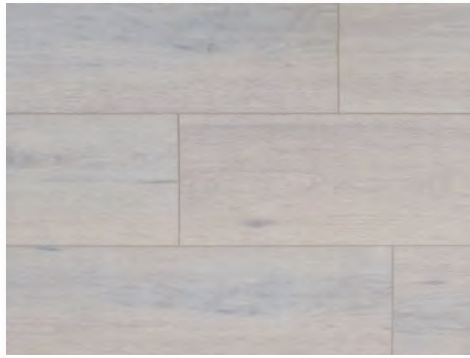
# STORM



## Tile

4" x 12"  
Heather Grey

supermod.



## Flooring

Rigid Core Luxury Vinyl Plank  
Light Grey

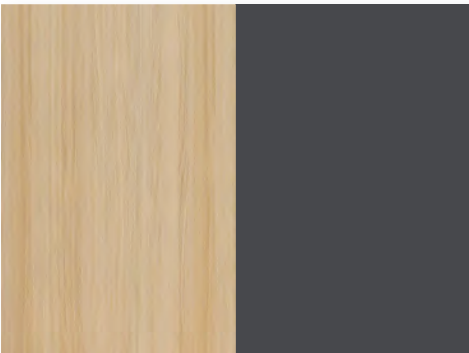
supermod.



## Countertops

Quartz  
Statuario

supermod.



## Cabinets

Ivory Oak  
Slate

supermod.



## Paint

Benjamin Moore  
Chantilly Lace OC-65

supermod.

## supermod.

We strongly believe in delivering a premium product which is why we choose quality products and materials in constructing all **supermod** homes. No upgrades are needed with our premium standard finishes.

During the purchase process of your home for the Sitka Landing development, you can choose from our pre-set options for cabinets, tile, flooring, and paint, along with exterior finishes and details. Utilizing 3D design we have detailed your entire home, inside and out to ensure nothing has been overlooked.

[hello@sitkalanding.com](mailto:hello@sitkalanding.com)

