



SitkaLanding *Cortez*

Welcome to Sitka Landing! A new community with 64 single family homes ranging from 950 - 1200 square feet. Our Exclusive West Coast designed 2 and 3 bedroom homes from Supermod homes create this truly unique development.

A community close to trails, fishing, shopping, beaches, lakes, skiing, golfing and much more. Rentals and Pets allowed. Move in early 2023. www.sitkalanding.com



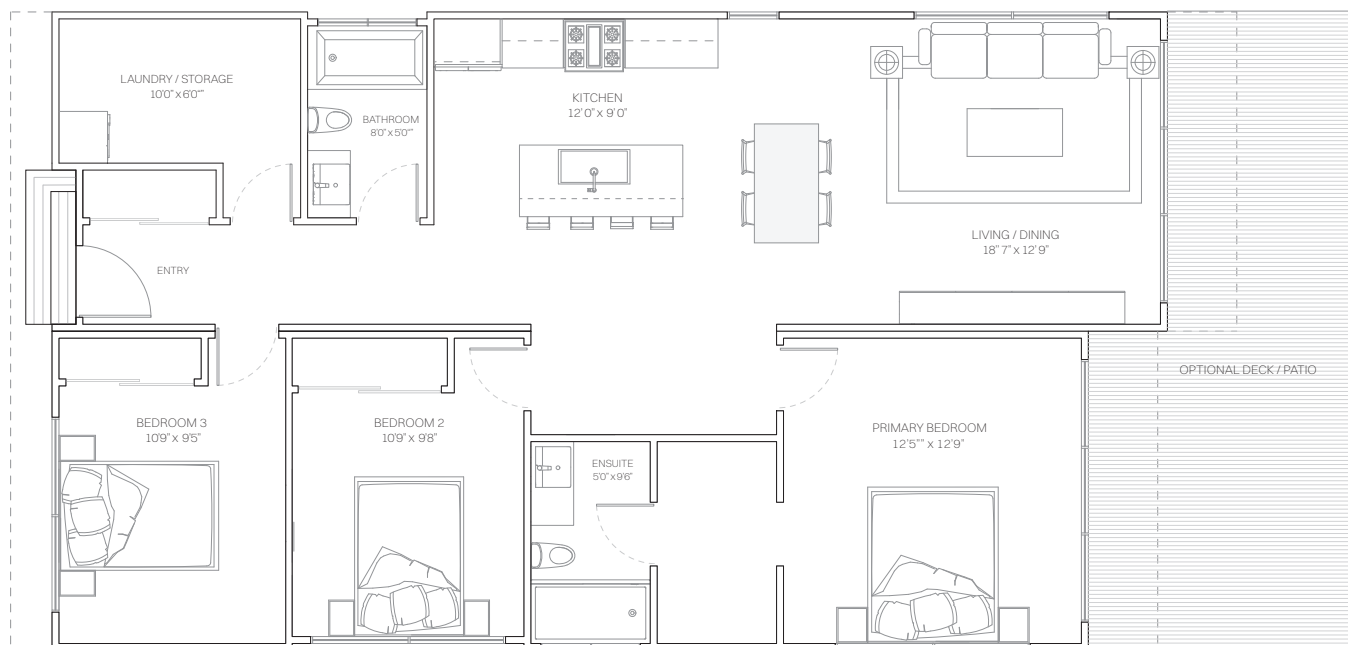
cortez.

The floor plan of our Cortez home ticks off all of the boxes. Complete with 3 spacious bedrooms, 2 full bathrooms, storage and laundry. Your primary bedroom has a walk in closet, 4 piece ensuite and 8'x 11' oversized slider to the outdoors. The open concept kitchen, dining and living compliment this Cortez layout.

Like all Supermod designs, Cortez comes with standard high end finishes including quartz countertops, custom cabinets, 10' vaulted ceilings, oversized sliding glass doors and a heat recovery system ensuring your home's temperature will stay consistent, while keeping your annual costs down. Supermods homes are built to the highest standards starting with a steel frame that will last a lifetime.



Click here for an immersive 360 experience





CORTAZ.

Specifications

3 Bedroom Laundry & Storage
2 Bathroom 1,200 Square Feet

Contact

hello@sitkalanding.com

Comprehensive Warranty

2/5/10 Year new home warranty
Dedicated support from Team **Supermod**

Features

Premium Kitchens

- Custom cabinets with soft close & designer hardware
- Wood grain feature cabinetry
- Large stainless kitchen sink
- Faucet with pull down spray head
- Quartz countertops with waterfall edge
- Pendant lights above island
- Pantry off the kitchen
- Stainless steel appliance package with gas range

Designer Interiors

- Two colour schemes: mist & storm
- 10' vaulted ceilings
- Designer coordinated color schemes
- Heat recover system
- Wide vinyl plank flooring
- Full height double glazed 8' x 11' oversized patio doors
- Dimmable pot light fixtures

Framing & Exterior Finishes

- Full lgs steel framing with g90 coating
- Metal standing seam roofing
- Metal & james hardie siding
- Wood grain metal feature areas & soffits
- Full wrap exterior rigid insulation
- Frost free hose bibs
- Exterior electrical outlets
- Outdoor gas connection for heater and bbq
- R32 vaulted ceiling
- R-36 floor system
- Effective R22 walls

Spa Inspired Bathrooms

- Full tile shower & tub surrounds
- Primary walk-in shower with frame-less glass
- Full tub in secondary bathroom
- Rain shower heads
- Custom cabinets with soft close & designer hardware
- Quartz countertops

Additional

- Full size washer & dryer
- Ring doorbell
- 9" smart home station with smart lights & more
- Solar & electric charging stations ready
- Storage room
- Hard-wired smoke detectors
- Gas on demand hot water system
- 100-amp electric service panel with arc fault breakers



MIST



Tile

4" x 12"
White

supermod.



Flooring

Rigid Core Luxury Vinyl Plank
French Oak

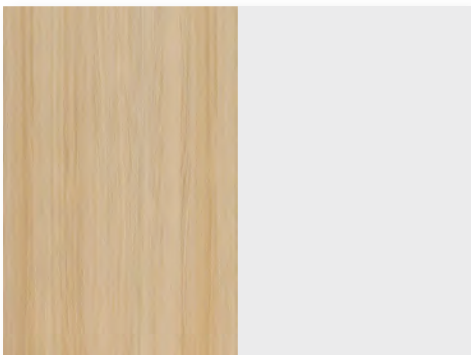
supermod.



Countertops

Quartz
Statuario

supermod.



Cabinets

Ivory Oak
Snowfall White

supermod.



Paint

Benjamin Moore
Chantilly Lace OC-65

supermod.

supermod.

We strongly believe in delivering a premium product which is why choose quality products and materials in constructing all **supermod** homes. No upgrades are needed with our premium standard finishes.

During the purchase process of your home for the Sitka Landing development, you can choose from our pre-set options for cabinets, tile, flooring, and paint, along with exterior finishes and details. Utilizing 3D design we have detailed your entire home, inside and out to ensure nothing has been overlooked.

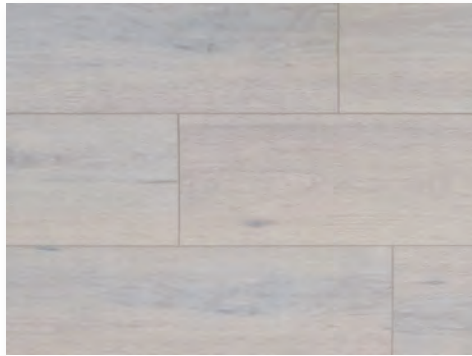
STORM



Tile

4" x 12"
Heather Grey

supermod.



Flooring

Rigid Core Luxury Vinyl Plank
Light Grey

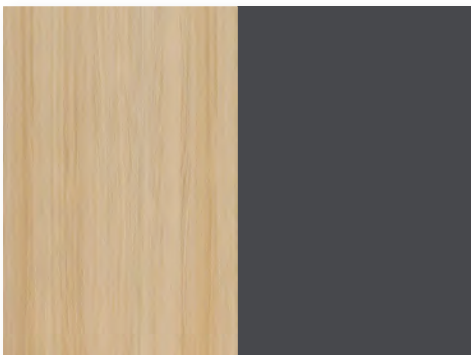
supermod.



Countertops

Quartz
Statuario

supermod.



Cabinets

Ivory Oak
Slate

supermod.



Paint

Benjamin Moore
Chantilly Lace OC-65

supermod.

supermod.

We strongly believe in delivering a premium product which is why choose quality products and materials in constructing all **supermod** homes. No upgrades are needed with our premium standard finishes.

During the purchase process of your home for the Sitka Landing development, you can choose from our pre-set options for cabinets, tile, flooring, and paint, along with exterior finishes and details. Utilizing 3D design we have detailed your entire home, inside and out to ensure nothing has been overlooked.

hello@sitkalanding.com

